

WE JUST HAD A MAJOR EARTHQUAKE

WHERE ARE RESPONDERS AND RESOURCES NEEDED?

Come Learn About USGS Tools to Rapidly Assess and Earthquake's Economic and Human Impact

Date & Location:

Tuesday, February 10, 2015 at 3:30 P.M.

Utah Cultural Celebration Center

1335 West 3100 South, West Valley City, Utah 84119

Lecturer: Dr. David Wald. Seismologist with the U.S. Geological Survey and Colorado School of Mines.

Overview: The U.S. Geological Survey (USGS) has developed several near-real time earthquake information systems that provide rapid and automated alerting of estimated economic and human impacts following earthquakes. In this lecture Dr. Wald describes the benefits and use of each of these systems and also describes how this information is collected, analyzed, and displayed.

David Wald has been a pioneer in developing and operations of several real-time information systems at the USGS National Earthquake Information Center such as "Did you feel it?", Shake Map, ShakeCast, and PAGER, that serve a broad audience including first responders, government officials, utilities, earth scientists, and engineers. More than 70,000 individuals receive alerts in California, Washington, Utah, Hawaii, Nevada, and Alaska.

Course Website: <http://utah.eeri.org/> - **Contact Info:** Brent Maxfield maxfieldba@ldschurch.org - Phone: 801.240.1529

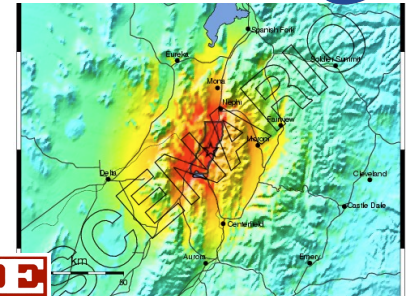
Sponsored by:

Who Should Attend:

- Emergency Managers, First Responders, Government Officials, Utilities, Earth Scientists, Seismologists, Geologists, and Engineers.

Focus Topics:

- ShakeMap
- ShakeCast
- PAGER
- Emergency Management



EERI Utah Chapter - Salt Lake County Emergency Management